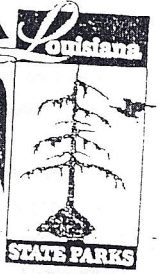
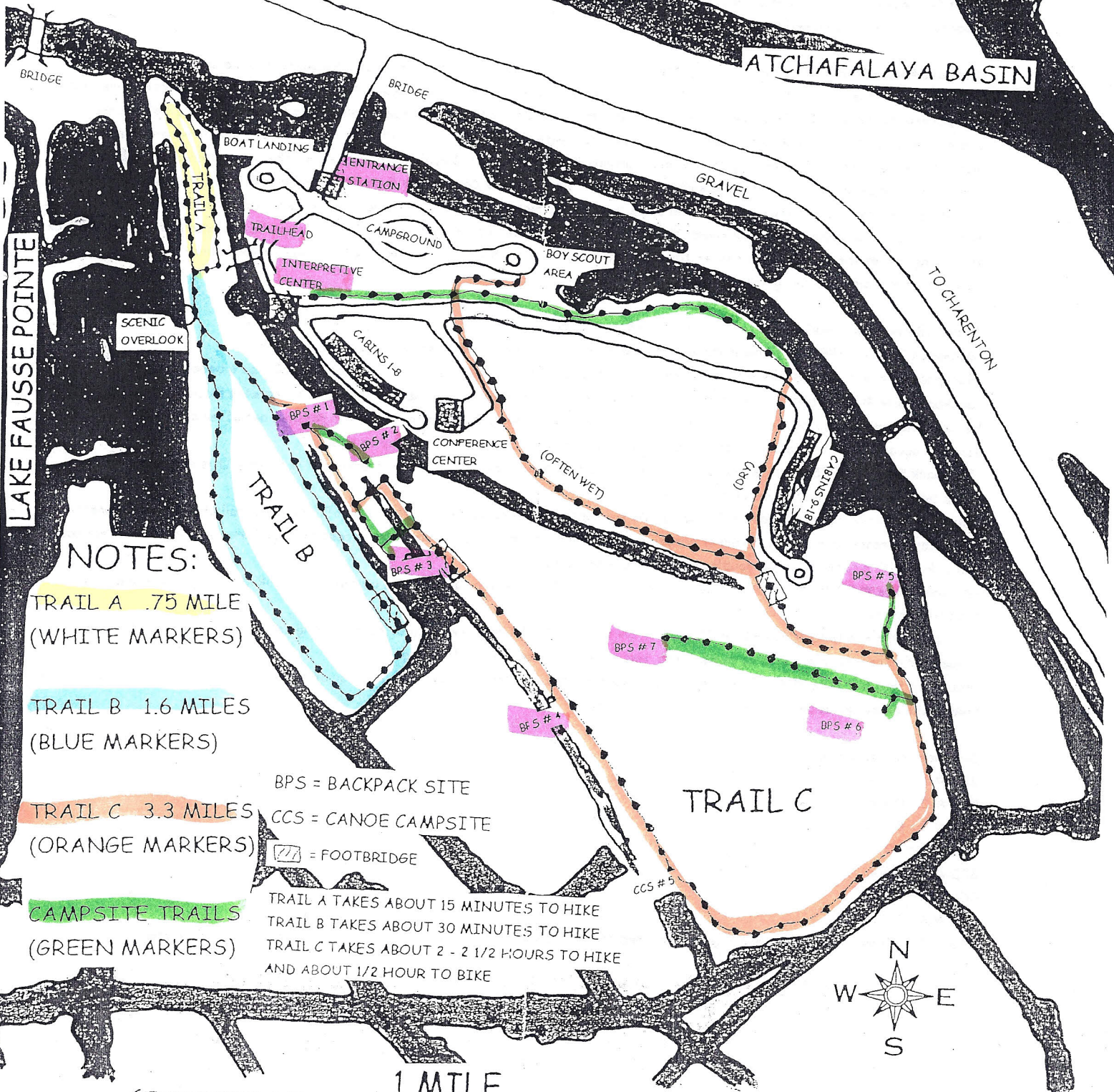


# LAKE FAUSSE POINTE STATE PARK TRAIL SYSTEM



0 HWY. 3083 - BUTTE LA ROSE - HENDERSON - I-10  
 LEVEE ROAD (LA. HWY. 352)  
 HARD SURFACE



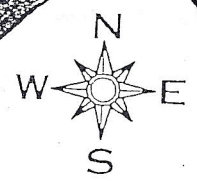
## NOTES:

- TRAIL A .75 MILE (WHITE MARKERS)
- TRAIL B 1.6 MILES (BLUE MARKERS)
- TRAIL C 3.3 MILES (ORANGE MARKERS)

**CAMPSITE TRAILS**  
 (GREEN MARKERS)

BPS = BACKPACK SITE  
 CCS = CANOE CAMPSITE  
 [Footbridge symbol] = FOOTBRIDGE

TRAIL A TAKES ABOUT 15 MINUTES TO HIKE  
 TRAIL B TAKES ABOUT 30 MINUTES TO HIKE  
 TRAIL C TAKES ABOUT 2 - 2 1/2 HOURS TO HIKE  
 AND ABOUT 1/2 HOUR TO BIKE



1 MILE